

Typhoenix

Grommet Expander Catalogue

Electric Expander | Pneumatic Expander | Manual Expander

 www.typhoenix.com

 info@typhoenix.com

 0086 15369260707



CONTENTS

01 ▲ Product Overview

02 ▲ Expander Type

03 ▲ Electric Expander

04 ▲ Pneumatic Expander

05 ▲ Manual Expander

06 ▲ Main Customers

Overview

Product Overview

Grommet expanders are used in the automotive wire harness industry to install Grommets (also called rubber sleeves) on wire harnesses. Our company designs and manufactures different Grommet expanding professional equipment based on different models and sizes of grommets.

The Grommet Expander simplifies wire harness assembly and maintenance by efficiently routing wires and cables through grommets. It's adaptable to different grommet sizes and types, made of high-quality materials, has an ergonomic design, saves time, and produces professional results. Perfect for automotive and electrical professionals, as well as DIY enthusiasts.

Brand
Cylinder

Durable
Construction

Time-Saving
Solution



Grommet Expander Type



Electric Expander

- TYEE-100 Electric Expander
- TYEE-140 Electric Expander
- TYEE-100A Electric Expander
- TYEE-140A Electric Expander
- TYEE-140T Electric Expander



Pneumatic Expander

- TYPE-50 Pneumatic Expander
- TYPE-75 Pneumatic Expander
- TYPE-100 Pneumatic Expander
- TYPE-100A Pneumatic Expander
- TYPE-160 Pneumatic Expander



Manual Expander

- TYME-15 Manual Expander
- TYME-20 Manual Expander
- TYME-25 Manual Expander

Electric Expander

Expansion range

50mm-140mm

Overall Dimensions

660*550*1050

Weight

117Kg



Claw Diameter

160mm or
Customized

Remark:

The above parameters are theoretical data, and the actual data will vary according to different Grommets



TYEE-100

- Expansion Max.: 100mm

TYEE-140

- Expansion Max.: 140mm

TYEE-100/140II

- Expansion Max.: 100/140mm
- Two gear selection

TYEE-140III

- Expansion Max.: 140mm
- Three gear selection

TYEE-140T

- Expansion Max.: 140mm
- Two gear selection
- Remove Grommets

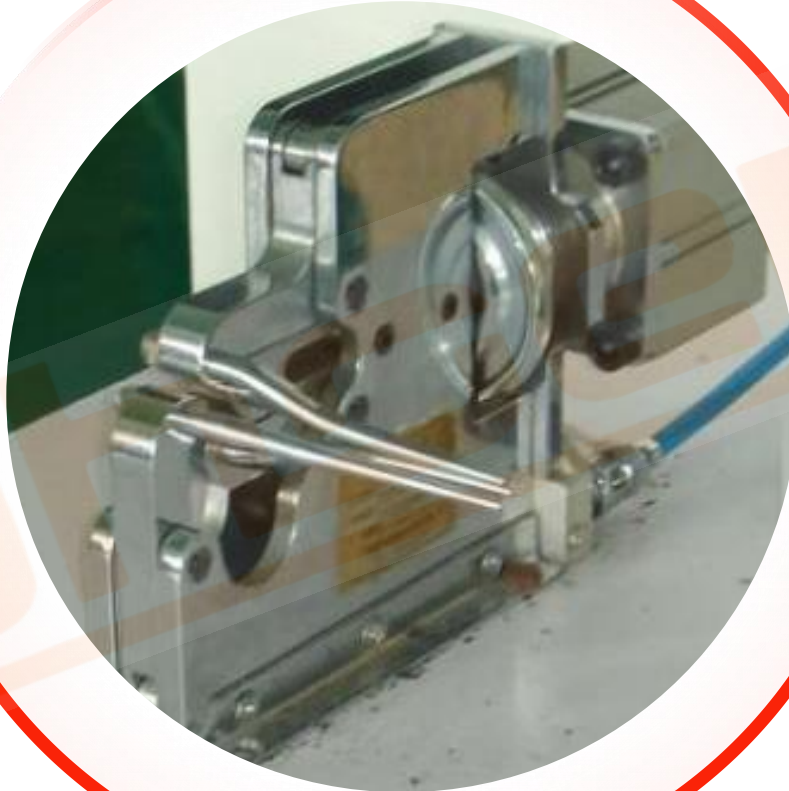
Pneumatic Expander

Expansion range

10mm-160mm

Weight

15Kg



Overall Dimensions

430*270*260

Cylinder Brand

AIRTAC

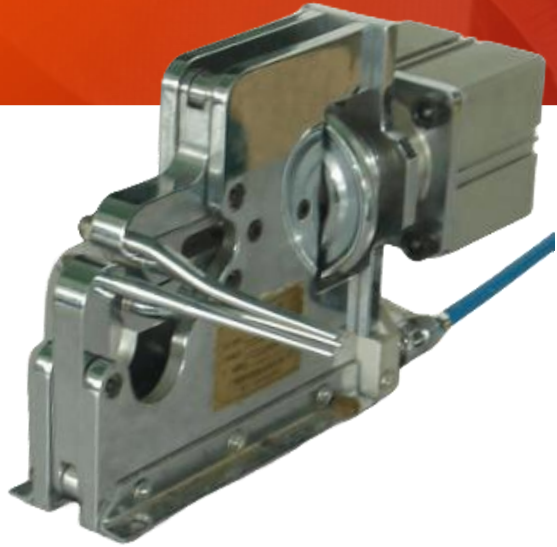
Claw Diameter

100/130/160mm

Remark:

The above parameters are theoretical data, and the actual data will vary according to different Grommets

Usage conditions: Dry compressed air, with a pressure greater than 0.6Mpa~0.7Mpa



TYPE-25/50/100

- Expansion Max.: 25/50/100mm
- **AIRTAC** cylinder
- Single Cylinder



TYPE-100S

- Expansion Max.: 100mm
- **AIRTAC** cylinder
- Double Cylinders



TYPE-160

- Expansion Max.: 160mm
- **AIRTAC** cylinder
- Four Cylinders

Manual Expander

TYME-15

Expansion range $\leq 15\text{mm}$

TYME-20

Expansion range $\leq 20\text{mm}$

TYME-25

Expansion range $\leq 25\text{mm}$



MANUAL EXPANDER

Main Customers





Thanks

Car wiring harness solution

TyphoeniX